

TruVision Navigator: “All-inclusive” VMS

Overview, version 9.0

Device tree

Provides quick access to TruVision video cameras and recorders, TruPortal access control, UltraSync intrusion and IFS network switches.

Facility/campus maps

Import facility/campus maps and place cameras, access control doors, and intrusion sensors on maps.

Easily embed maps within maps.

Notifier

Provides real-time, color-coded video event notifications.

Viewer

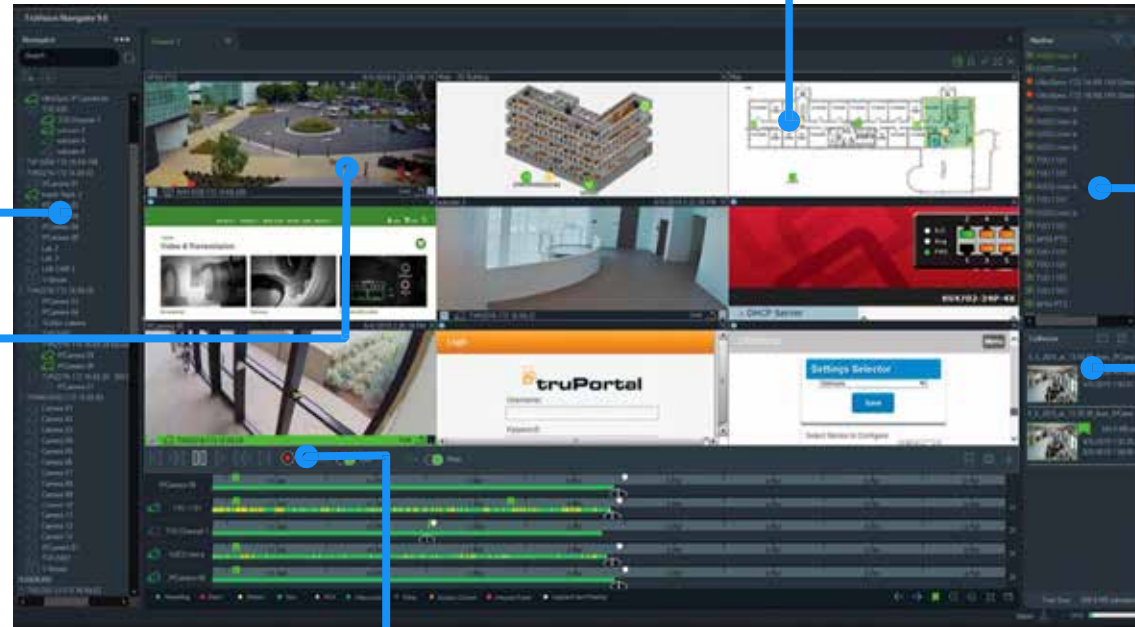
View live and recorded video with up to 10 detachable video viewing tabs allowing you to create a virtual video wall. The pop-up event monitor window provides live video during an alarm. Users can easily setup individual video viewing tiles for sequencing of multiple cameras for easily monitoring.

Video playback controls

Easily play, pause, rewind and bookmark video recordings with controls and timeline.

Collector

Acts as a holding repository for video segments, snapshots and local recordings ready for export.



TruVision Navigator: “All-inclusive” VMS

Key features, version 9.0



- **Discover**
- Add, manage and select equipment using the TruVision Navigator interface



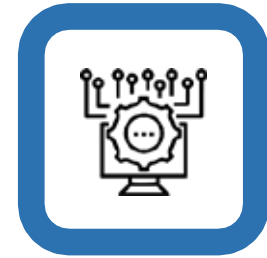
- **Configure**
- Login and configure equipment from within the TruVision Navigator Interface



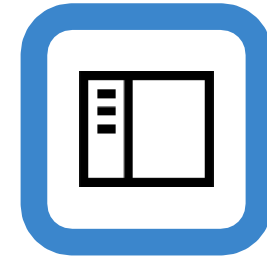
- **Control**
- Control cameras & outputs
- Control PoE



- **Monitor**
- Monitor cameras of several sites in real time
- Monitor real time port status of IFS switches



Scalable and
compatible



User-friendly
interface



Feature-rich and
affordable